



LIMITED ACCESS SECTION 18

SPECIAL INTEGRATOR SECTION

ASSA ABLOY

**Corbin
RusSwin**

hes

Norton

SARGENT®

SECURITRON™

YALE

KABA®

Saflok®
A member of the KABA® Group

PERSONA™

Call for more information or
to find out if you qualify to
purchase these items.



NEW

LIMITED ACCESS

Index

Symbols

71M & 76M	29-30
790 Electronic Lock	25-28

A

Access 600 RNE1	8
Access 700 PAC1	11
Access 800 NE1	9

C

Channel Partner	2
-----------------	---

E

Electric Strikes	20
------------------	----

H

Harmony Series	6
Hi-O Technology	18-24
Hospitality Locks	34

P

Passport 1000P1	5
Passport 1000P2	4
Perimeter Access	37
Powermatic	22
Profile Series v.N1	7
Profile Series v.S2	3



R

Remote Controllers	13
RezShield	31, 32

S

Symphony	10
----------	----

V

Vendors

ASSA ABLOY	2-24
CORBIN RUSSWIN	8, 9, 11
H.E.S.	20
KABA ILCO	25-32
NORTON	22
PERSONA	12-17
SAFLOK	33-39
SARGENT	3-7, 23
SECURITRON	24
YALE	10

ASSA ABLOY Channel Partner Programs

ASSA ABLOY companies have recently released several leading-edge products that require a higher level of training and expertise to ensure successful installation and commission. These products offer integrated solutions and advanced technologies that interface with online access control systems and include Sargent Profile Series v.S2 WiFi locks, Harmony Series Integrated Wiegand locks, and Profile v.N1 Integrated Wiegand locks.

Because of these products' advanced capabilities, ASSA ABLOY has created two new channel partner programs: Authorized Channel Partner and Certified Integrator. Open to all qualifying SARGENT distributors and integrators, these programs teach, through a multi-day, hands-on class, everything needed to order and recommend products; assess, install, and integrate hardware into an access control system; and troubleshoot.

ANY DISTRIBUTOR OR INSTALLER WHO WISHES TO PURCHASE AND/OR INSTALL PRODUCTS THAT FALL INTO THESE PROGRAMS MUST FIRST BE CERTIFIED.

Authorized Channel Partner Program

The Authorized Channel Partner (ACP) program focuses on selling the right product for the right application. This training will enable our partners to assist their accounts providing a value-added service, differentiating them from other distribution companies. The program is open to those who resell products but do not integrate or install them. In order to quote, order, or sell a certified product from ASSA ABLOY, a company must have at least one person in their employ that has successfully completed the required ASSA ABLOY curriculum.

Certified Integrator Program

The Certified Integrator (CI) program provides hands-on training for security systems integrators and network administrators. Not only does this training familiarize candidates on product features and applications, it also gives them valuable experience installing, commissioning, and troubleshooting the products in a real-world environment. This category extends to End Users that install and manage their own systems and third party lock installers.

For more information on the ACP and CI programs, the qualifications needed and training provided, please contact Jonathan Jensen in our electronics department.

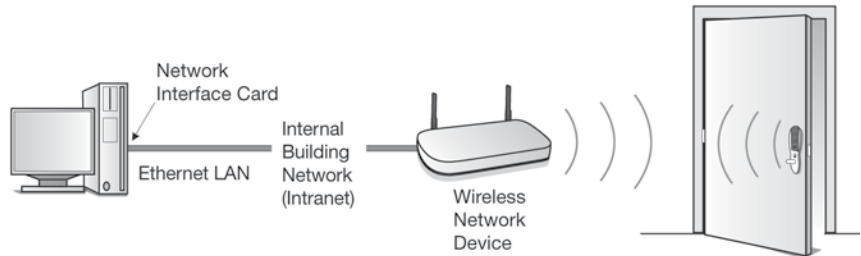
More information on the products across ASSA ABLOY that require ACP or CI certification can be found at www.intelligentopenings.com

SARGENT®**ASSA ABLOY**

Intelligent
Wireless
Solutions

SARGENT® Profile Series v.S2

Intelligent Wireless Solutions



The SARGENT Profile Series v.S2 locks offer the ability to extend the reach of your access control system using wireless technology. Using the building's existing WiFi infrastructure, the v.S2 can be added to locations where it would be difficult or cost-prohibitive to have a wired lock and provides complete access control features in online and offline operation.

The v.S2 integrates all components into one device - ANSI Grade 1 quality lock or exit device, card reader, door position switch and Request-to-Exit sensor - and is available in mortise lock, bored lock and exit device.

Features

- Complete access control features in online and offline operation
 - Real-time alarms: Forced Door, Unknown Card and Door Held Open
 - Lock is updated via WiFi communication
 - Open architecture design supports integration with all access control systems
- Advanced data security with standard encryption techniques
 - 128-bit encryption keys change after every exchange ensuring high security
 - Supports open standard WiFi network security - WEP, WPA, LEAP
- Maximum uptime and redundancy through distributed intelligence at each opening
 - Stand-alone operation - even in absence of a network
 - Supports 2,000 users and 10,000 event transaction history (audit trail)
- Real-time lockdown capabilities*
- Supports all HID 125 kHz proximity formats up to 39 bits
- Dual credentialing with keypad option available
- Available for use on exterior doors: weatherseal gasket, conduit and shroud
- Available with MicroShield™ antimicrobial finish
- Provided with plug and play ElectroLynx® connectors for ease of hard powered installation

Available with:

- 10 Line Bored Lock
- 8200 Series Mortise Lock
- 80 Series Exit Device

ASSA ABLOY
AUTHORIZED
CHANNEL
PARTNER



ASSA ABLOY
CERTIFIED
INTEGRATOR



SARGENT
ASSA ABLOY

PASSPORT
1000P2

PASSPORT WiFi Campus
Access Control
1000 P2



The SARGENT Passport 1000 P2 intelligent WiFi lock provides access control to your hard-to-secure locations, using magnetic stripe and PIN code technologies for customized access to facilities.

Using an existing WiFi network, the Passport 1000 P2 connects as often or as little as you specify to maintain its local list of up to 2,400 users. Combined with the PERSONA Campus software, the P2 Series of locks integrate seamlessly into transactional and housing systems, providing comprehensive, reliable access control for the campus environment.

The P2 also integrates all components into one device - ANSI Grade 1 quality lock or exit device, card reader, door position switch and Request-to-Exit sensor - and is available in mortise lock, cylindrical lock and exit device.

PASSPORT 1000 P2 FEATURES

- Communicates via wireless (802.11b/g) network with host server or access control panel
- Battery-operated, ANSI BHMA Grade 1 lock hardware
- On-board memory for up to 2,400 users and 2,400 events
- Available with keypad and magnetic stripe or magnetic stripe only
- 3-hour UL fire rating provides ultimate life safety assurance
- ADA-compliant
- Key override available
- Available in many hardware finishes

- Aesthetically complemented with Studio Collection levers for mortise locks and exit devices, and Coastal Series levers for exit devices, mortise and cylindrical locks

APPLICATIONS

Ideal for Campus:

- Residence Halls
- Restrooms
- Dining Halls
- Libraries
- Book Stores
- Leisure Centers
- Sports Halls
- Classrooms
- Laboratories

Integrates into
OneCard Solutions
Seamless database
integration and
software interface
with enterprise,
transaction and
housing systems



SARGENT
ASSA ABLOY

PASSPORT
1000P1

PASSPORT PoE Campus
Access Control
1000 P1



The SARGENT Passport 1000 P1 intelligent Power over Ethernet (PoE) lock provides online access control, using magnetic stripe and PIN code technologies for customized access to facilities.

Using the facility's Ethernet network, the Passport 1000 P1 provides full online access control with network cabling.

Combined with the PERSONA Campus software, the P1 Series integrates seamlessly into transactional and housing systems, providing comprehensive, reliable access control for the campus environment.

The P1 also combines discrete components into one device - ANSI / BHMA Grade 1 hardware, card reader, door position switch and Request-to-Exit sensor - and is available in mortise lock, cylindrical lock and exit device.

PASSPORT 1000 P1 FEATURES

- Intelligent, integrated ANSI Grade 1 lockset, available in Cylindrical Lock, Mortise Lock, and Exit Device
- 2,400 users per lock
- 10,000 event transaction history/audit trail
- Dual credentialing available with keypad and magstripe
- Real-Time Door Status Monitoring
- For use on exterior doors: weatherseal gasket, conduit and shroud

BENEFITS

- Intelligence built into the lock for local decision making
- Utilizes network infrastructure for cost-effective installations; no proprietary equipment required

- Reliable communication and power from one Ethernet (CAT5e or higher) cable
- Compliant with 802.3af specifications for Power over Ethernet
- No power supply needed
- Monitoring capabilities are powered and connected to the system full-time

APPLICATIONS

Ideal for Campus:

- Residence Halls
- Restrooms
- Dining Halls
- Libraries
- Book Stores
- Leisure Centers
- Sports Halls
- Classrooms
- Laboratories

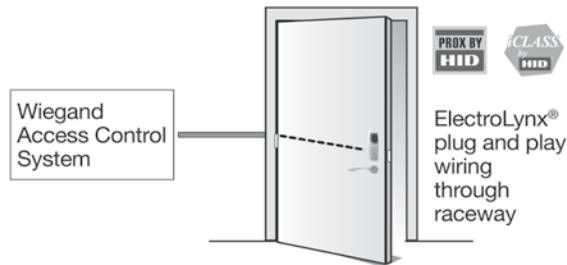
Integrates into OneCard Solutions Seamless database integration and software interface with enterprise, transaction and housing systems



SARGENT
ASSA ABLOY



Harmony Series Online Integrated Wiegand Access Control Solution



Big features in a small, well-styled lock. Card reader, monitoring capabilities and SARGENT ANSI/BHMA Grade 1 hardware with direct Wiegand output are beautifully presented in Harmony Series. Designed to blend into any environment flawlessly, Harmony is in tune with the aesthetic needs of the architect, and provides high security for the facility manager. With all the components consolidated into the lock, installation time is reduced by 50% as compared to traditional access control installations.

Features

- Integrated ANSI/BHMA Grade 1 hardware, available in
 - 10 Line Bored Lock
 - 8200 Series Mortise Lock
 - 80 Series Exit Device
- Supports HID 125 kHz prox or 13.56 MHz iCLASS® credentials
- Consolidates all components into the lock
 - Card reader, door position switch and request to exit monitoring sensors
 - Eliminates reader interface modules
 - Lockdown capable
- Secure-side electronics
- For use on exterior doors: weatherseal gasket standard; shroud available
- Available with MicroShield® antimicrobial finish
- Provided with plug and play ElectroLynx® connectors for ease of installation

Available with SARGENT Designer Levers

- Studio Collection
- Coastal Series

Benefits

- Open architecture platform compatible with all popular access control systems
- Reduces installation time by 50%
 - Requires only one cable run from the lock to the access control panel
 - Maintains architectural integrity around the door
 - Fewer discrete components to install than traditional access control
- Direct Wiegand output
- No special credentials needed
- Fewer terminations result in improved reliability



SARGENT®

ASSA ABLOY

SARGENT Profile Series v.N1

Wiegand Compatible Locks



The SARGENT Profile Series v.N1 lock offers the ability to seamlessly integrate Grade 1 security into an existing Wiegand compatible access control system. Door monitoring capabilities include Request-to-Exit which monitors the movement of the inside lever and external Door Position Switch.

Profile v.N1 locks are available in Cylindrical, Mortise and Exit Trim. Available as Fail-Safe or Fail-Secure.

Mechanical Features

- Meets ANSI/BHMA A156.2 Grade 1 requirements
- Solenoid operated 24VDC cylindrical lock, fail safe or fail secure
- Latch brass, 1/2" (13mm) throw; UL Listed 3/4" (19mm) throw (41- prefix) available
- 2-3/4" (70mm) backset standard. Consult factory for other backsets available
- For 1-3/4" (44mm) thick door standard. Consult factory for other thicknesses
- Handed
- Heavy duty lever spring return
- 3 through-bolt position combinations
- Steel mounting studs
- Cylinder override standard
- Not available with 10-UL- or VS- prefixes

Escutcheons

- Zinc die cast
- Projection at bottom 11/16" (17mm) less lever
- Projection at top 1-5/8" (41mm)
- Tactile keypad
- Operating temperature -40°F (-40°C) to 135°F (57°C)
- LED's indicate valid/invalid entries
- Keys/buttons with double shot mold construction prevents wear

v.N1 10 Line Cylindrical Locks

10G270 Fail Safe -

Power off unlocks outside trim

10G271 Fail Secure -

Power off locks outside trim

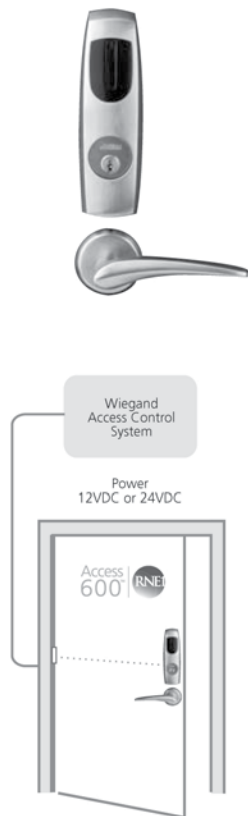
- Key outside always retracts latch
- Lever outside rigid except when trim is unlocked electronically
- Lever inside always retracts latch
- Guardbolt deadlocks latch
- Request to Exit monitoring standard
- Door position switch included to allow for full monitoring



**Corbin
Russwin**

ASSA ABLOY

Networked
Access Control



Access
600™ | RNE1

Sleek Networked Access Control

With the sleek and petite Access 600 RNE1 you can seamlessly integrate a full range of Corbin Russwin hardware with your Wiegand Access Control System.

Features & Benefits

Integrated Wiegand Solutions:

- › Consolidates all components into the lock
- › Incorporates card reader and DPS, REX and Latchbolt monitoring sensors with ANSI Grade 1 electromechanical lock hardware
- › Eliminates reader interface modules
- › Requires only one cable run from lock to access control panel
- › No special credentials needed; works with your facility's prox and iCLASS cards
- › Maintains architectural integrity around the door

Door Status Monitoring:

- › Request to exit and door position monitoring standard on all products
- › Mortise lock monitoring:
 - › Secure door position monitors latchbolt and door position in series
 - › REX monitoring

Easily Adaptable:

- › Use an existing access control system
- › Instantly add or remove users, or change users' access profiles

Fully Integrated:

- › Easy retrofits for existing buildings
- › 50% faster installation for lower installed cost and reduced disruption

Superior Corbin Russwin Hardware:

- › The Access 600 RNE1 is available with our Grade 1 Electromechanical Commercial Hardware:
 - › CL33600 Cylindrical Lock
 - › ML20600 Mortise Lock
 - › ED5000N x 9600 Exit Devices
 - › Available with MicroShield® antimicrobial finish
 - › Available with decorative Muséo® and Vineyard™ Collection Levers



ElectroLynx®

As part of their promise to provide innovative, fast and effective high security solutions to their customers, ASSA ABLOY Group companies offer ElectroLynx®, a universal quick-connect system that simplifies the electrification of the door opening. ElectroLynx® is a registered trademark of ASSA ABLOY Inc.



MicroShield®

As part of their promise to provide innovative solutions to their customers, ASSA ABLOY Group companies offer the MicroShield® technology, a silver-based antimicrobial coating designed to stem the spread of germs and bacteria. MicroShield® is a trademark of Yale Security Inc., an ASSA ABLOY Group company.

ASSA ABLOY
AUTHORIZED
CHANNEL
PARTNER



ASSA ABLOY
CERTIFIED
INTEGRATOR



**Corbin
Russwin**

**ASSA ABLOY
Networked
Access Control**



Features & Benefits

Integrated Wiegand Solutions:

- › Cost effective, expandable platform
- › Incorporates mechanical door hardware into existing access control platforms

Door Status Monitoring

- › Complete monitoring of door from the lock
- › Integrated Door Status Switch (mortise locks)
- › Deadbolt Monitor
- › Latchbolt Monitor
- › RX Output

Easily Adaptable

From a PC connected to the access control system, add or remove users immediately or change existing users' access profiles

Fully Integrated

- › Easily retrofits to existing buildings
- › Tightens security and reduces labor
- › Panel interface board available in two or four door versions

The Corbin Russwin Access 800 NE1 makes it easy to expand your Access Control System - from mortise locks to exit devices - all Wiegand-compatible without any additional software.



Superior Corbin Russwin Hardware

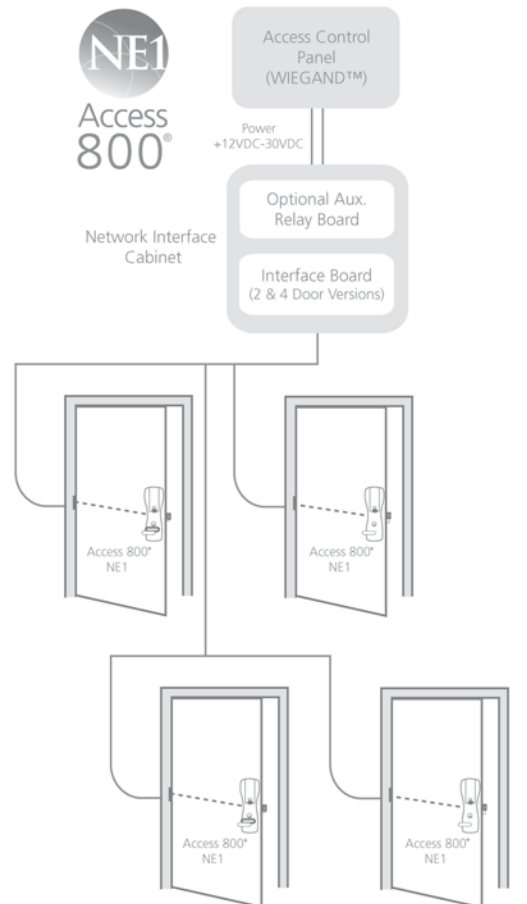
- › The Access 800 NE1 is available with our Grade 1 Electromechanical Commercial Hardware
- › CL33800 Cylindrical Lock
- › ML20800 Mortise Lock
- › ED5000N x 9800 Exit Devices
- › Available with MicroShield® antimicrobial finish

Specifications and System Requirements

Operating Power:
12 or 24 VDC solenoid fail safe and fail secure units available

Software:

- › Third party access control system and software
- › Accepts all HID 125kHz formats.



**ASSA ABLOY
AUTHORIZED
CHANNEL
PARTNER**

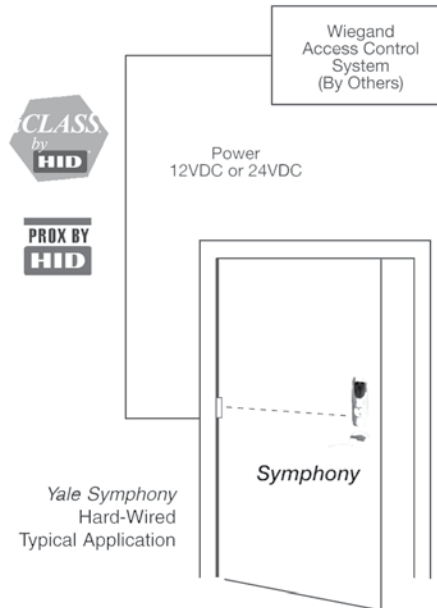


**ASSA ABLOY
CERTIFIED
INTEGRATOR**





Symphony



SPECIFICATIONS AND SYSTEM REQUIREMENTS

Software:

- Third party access control system and software (by others)
- Accepts all HID 125 kHz (26-39 bit) or iCLASS® 13.56 MHz (2K-32K) proximity formats

Operating Power:

- Mortise lock: 12VDC or 24VDC solenoid operated, available as Fail Safe or Fail Secure
- Cylindrical lock: 12VDC or 24VDC solenoid operated, available as Fail Safe or Fail Secure
- Exit devices: 24VDC solenoid operated, available as Fail Safe or Fail Secure
- 125 kHz reader: requires 12VDC
- 13.56 MHz iCLASS® reader: will operate with either 12VDC or 24VDC

SYMPHONY™ IS IDEAL FOR:

- Government Facilities
- Universities
- Corporate Complexes
- Healthcare Facilities

- Standard Wiegand Interface
- Easily integrates with access control systems
- Complete monitoring of the opening
- Secure-side electronics
- Available with proximity readers to accept either HID 125 kHz (26-39 bit) or iCLASS® 13.56 MHz (2K-32K) formats

ASSA ABLOY
AUTHORIZED
CHANNEL
PARTNER



ASSA ABLOY
CERTIFIED
INTEGRATOR










Corbin Russwin Access 700 PAC1 lockset with PERSONA Campus software is an intelligent, One Card solution for economical and effective campus access control. The Grade 1 quality lockset - available with keypad and magnetic stripe, or magnetic stripe only versions - is a battery operated lockset with on-board memory.

PERSONA Campus software technology provides seamless database integration and software interfacing with enterprise, transaction and housing systems.

Access 700 offline locks with PERSONA provide centralized security at a fraction of the cost of a hardwired system, as well as the top quality and high security you expect from Corbin Russwin.

Learn what the Access 700® PAC1 Lockset with PERSONA™ can do for you

- One Card Solution
Seamless database integration and software interface with enterprise, transaction and housing systems.
- Convenient overall administration
Interrogate individual locks and perform system upgrades and changes quickly and easily.
- Quality access control designed with campuses in mind
An economical and effective solution for access control.
- Issue cards at multiple locations
Place terminals across campus, allowing administrators to issue new or replacement keycards in seconds.
- Customize access
Lets you define unlimited access, extended-hours access or no access, by user, by facility, down to the individual lock.
- Assure security for every user
A single keycard can provide user identification, building access, and parking privileges allowing for personalized security at its best.
- Time-control user access
Limit entry to specific areas and hours, controlling who goes where and when.



PERSONA™ OVERVIEW

What is VingCard Persona?

Persona is an access control system designed specifically for educational institutions. In most cases, existing magnetic stripe student and faculty ID cards with an open track I or track III can be used as keycards for these locks.



How Does It Work?

For example, one keycard (ID card) will allow a student access into his or her residence hall, individual room, laundry facilities, locked storage spaces and library facilities as well as appropriate labs and offices. Access privileges for multiple facilities may be customized for individual students, faculty and staff.

The Extra Step for Campus Security

PERSONA recognizes that lock systems that are secure for the hotel industry are not necessarily secure for the campus environment. Why? Most student and faculty ID cards - now used as keycards - have photos on them, which eliminates the anonymity typically found with a hotel key. Therefore, a lost keycard can be associated with someone's personal space, and access could be granted into an individual's residence hall room or office.

The PERSONA™ system requires that the card be accompanied by a PIN code for access, providing the extra step toward true security on campus.

Easy Replacement

This means that a lost or stolen card is not a security threat, since access is refused without the corresponding PIN code. Once a newly-issued card is inserted into the lock, the old card is automatically invalidated. Lost or stolen keycards are rendered useless and are easily replaced within the system.

The PERSONA™ electronic locks were the first offline electronic locks introduced specifically for educational facilities. They include a magnetic stripe card reader that requires a properly encoded magnetic stripe keycard, and a keypad to enter a corresponding 4-digit PIN code.



The locks are all metal for durability, which means there are no external plastic parts to be tampered with. The lock software is versatile enough to accommodate the many configurations of residence halls, faculty offices, and common areas.

It can accommodate up to one billion users and provides an audit trail that records the last 700 events in the lock including successful and failed access attempts, deadbolt thrown, door position, etc.

The lockcases themselves contain sensors that monitor movement within the lock including entries by card and PIN or emergency key, deadbolt use and door position.

PERSONA™ is the truly secure and cost-effective solution to securing a campus community.

ASSA ABLOY

PERSONA™

3700 Model Remote Controller

Each PERSONA Campus Remote Reader is completely independent and stand-alone with upgradeable Future-Proof™ Technology. There is no need for expensive wiring back to a central computer.

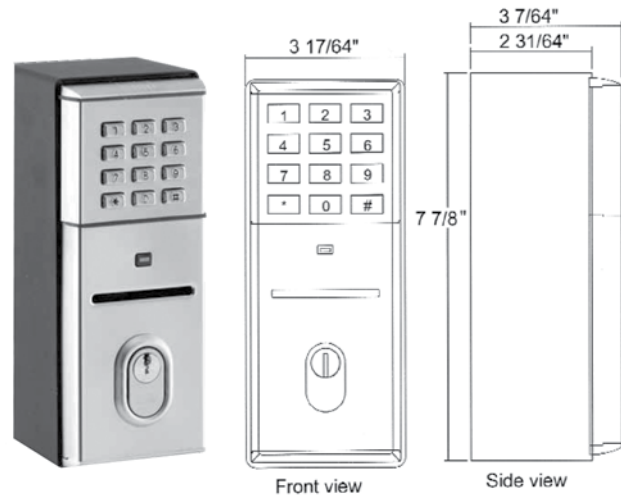
Features:

- Robust housing. Available for surface or flush mounting.
- Available in different finishes.
- Keycard read upon removal, ensuring that keycards are not left in the lock.
- High quality brass escutcheon reinforced by a steel plate for added security
- Heating element and weather-proof housing for outdoor mounting
- Relay board with all connections on se
- Connects to alarm and CCTV systems
- Stainless steel keypad

The PERSONA Remote Controller is for doors where the lockset cannot be used. A relay output controls magnetic locks, electric strikes, revolving doors, electric sliding doors, door openers, vehicale entrances/barriers, or other units.

The product allows you to control access privileges for cardholders, down to the exact location and time of day. On-board memory tracks who entered where and when, and if a door was propped, how long it remained open.

A three-tiered operating mode of passage, card only, or card-plus-PIN code offers the flexibility to tailor security from building to building, room to room, even door to door.



Technical Data:

Reader Unit Dimensions	Height	Width (1)	Depth (2)
For wall mounting	7-7/8" / 200mm	3-1/4" / 83mm	3-3/16" / 81mm
With flange or flush mounting	8-11/16" / 220mm	4-1/8" / 104mm	3-5/16" / 83.5mm
(1) Outer measurement of flange around the card-reader			
(2) Depth into wall			

Relay Board Dimensions	Height	Width	Depth
Relay board w/mounting plate	1-13/16" / 46mm	5-1/2" / 140mm	5-1/2" / 140mm

		Unit	Min.	Max.	Unit
Reader Unit/Relay Board	12±20%	VDC	40	90	mA
	24±20%	VDC	40	90	mA
Heating Element	12±20%	VAC/VDC		1,6	A
	24±20%	VAC/VDC		0,8	A

The card-reader has an internal backup battery mounted on the relay board to save memory in the event of a power failure. This battery is a 9V DC, 6LR61 and should be changed once a year. If the card-reader is to maintain normal operation during the loss of 120/230 VAC, an external power supply with battery backup must be used.

ASSA ABLOY

PERSONA™

5000 Model Locksets

Each PERSONA 5000 lockset is completely independent and stand-alone, featuring upgradeable Future-Proof™ Technology. There is no need for expensive wiring back to a central computer.

The lock's three-tiered operating mode of passage, card only, or card-plus-PIN code offers the flexibility to tailor security from building to building, room to room, even door to door. The system uses a standard, high or low coercivity magnetic stripe card with card tracks 1 or 3 open for encoding. A manual keyoverride is also provided for fail-safe backup in emergency situations. The on-board memory allows you to control access privileges for cardholders down to the exact location and time of day.

Features:

- Complete lockset.
- Stand-alone, battery operated lock; no need for expensive wiring.
- Unique LifeSafety cylinder — a recodeable, emergency-only override.
- Auxiliary latch and case hardened, steel deadbolt with full 1-inch throw, 3/4" latch.
- 3-hour UL fire rating for maximum security and safety.
- Stainless steel keypad.
- All electronics and batteries mounted in inner escutcheon on secure side of door.
- Extremely robust, high quality brass escutcheons reinforced by a steel plate for added security.
- Keycard read upon removal ensuring that keycards are not left in the lock.
- Different cylinder options: ASSA, MEDECO, SIGNATURE.
- Available without keypad.
- ADA compliant.

6000 Model

Each PERSONA 6000 lockset is completely independent and stand-alone, featuring upgradeable Future-Proof™ Technology. There is no need for expensive wiring back to a central computer.

The lock's three-tiered operating mode of passage, card only, or card-plus-PIN code offers the flexibility to tailor security from building to building, room to room, even door to door. The system uses a standard, high or low coercivity magnetic stripe card with card tracks 1 or 3 open for encoding. A manual keyoverride is also provided for fail-safe backup in emergency situations. The on-board memory allows you to control access privileges for cardholders down to the exact location and time of day.

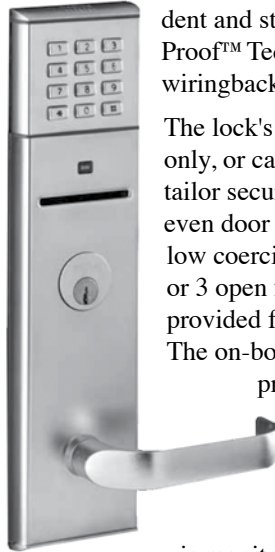
PERSONA™ has a unique Door Position Switch option, which monitors the position of the student's door. The auxiliary latch bolt

is monitored electronically in the lock, which enables

the detection of the door position during the time of the event, when audited. This latch detects and records if the door has been propped open and for what length of time. The Door Position Switch feature is available as a full mortise solution, which also provides full deadbolt functionality (optional). As more than 95% of all current and scheduled PERSONA installs are full mortise solutions, product pricing is significantly more cost effective.

Features:

- Complete lockset.
- Stand-alone, battery operated lock; no need for expensive wiring.
- Unique LifeSafety cylinder - a recodeable, emergency-only override.
- Auxiliary latch and case hardened, steel deadbolt with full 1-inch throw, 3/4" latch.
- 3-hour UL fire rating for maximum security and safety.
- Stainless steel keypad.
- All electronics and batteries mounted in inner escutcheon on secure side of door.
- Extremely robust, high quality brass escutcheons reinforced by a steel plate for added security.
- Monitored LifeSafety cylinder, deadbolt, latch and auxiliary latch to detect door position.
- Keycard read upon removal ensuring that keycards are not left in the lock.
- Different cylinder options: ASSA, MEDECO, SIGNATURE.
- Available without keypad.
- ADA compliant.



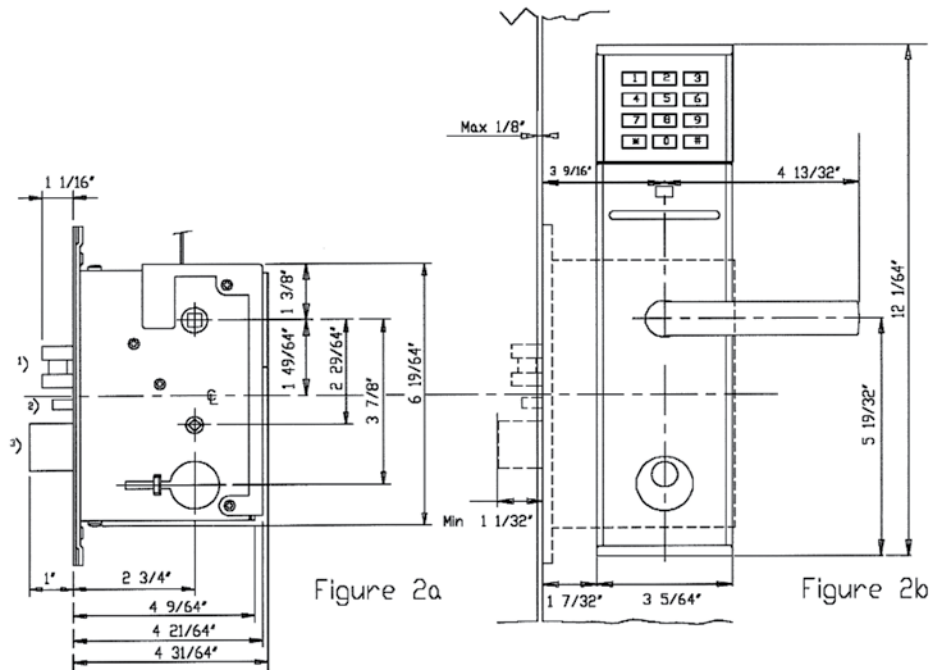
ASSA ABLOY

PERSONA™

6000 Model

Design Finishes:

- US26D (Satin chrome)
- US3 (Polished brass)
- US26 (Polished chrome)
- Light Bronze
- US4 (Satin bronze)
- RAL color finishes



PERSONA 6000 Technical Data/Features:

Card Track:	Standard track 3, optional track 1
Card Coercivity:	HiCo or LoCo
Monitoring:	Cylinder and Deadolt Cylinder, Deadbolt, Latch, and Auxiliary Latch

Operating Modes

PIN required:	In addition to card, a 4-digit PIN is required
No PIN required:	Only card is required

Passage Mode

- **Automatic:** The door automatically becomes unlocked during any passage mode setting (Lock Time Control Tables)
- **Manual:** The door only becomes unlocked if a keycard is inserted twice in a row to activate it during passage mode setting.

LifeSafety Cylinder

Security: 7-pin tumbler mechanism, high pick resistance, and recodeable.

Top Security: Patented key and blocking side bar system; full resistance to all known methods of picking (ASSA V10)

Optional: Other manufacturer's mortise cylinders

Power Supply:

6 AA alkaline batteries or special battery package
Voltage (max/min):

9 VDC / 7.8 VDC

Expected Battery Life:

1-3 years based on usage

ASSA ABLOY

LIMITED ACCESS

PERSONA™



4000 model

- Stand-alone, battery operated lock; no need for expensive wiring
- Extra security level on the card
- One minute resolution at the card
- Unique LifeSafety cylinder - a recodeable, emergency-only override
- Auxiliary latch and case-hardened steel deadbolt with full 1-inch throw, 3/4-inch latch
- 3-hour UL fire rating
- Extremely robust, high quality brass escutcheons reinforced by a steel plate for added security
- Monitored LifeSafety cylinder, deadbolt, latch, and auxiliary latch to detect door position
- Available without keypad
- ADA compliant

ASSA ABLOY

PERSONA™

TCP 6000 Model

Power Supply:

9V standard alkaline battery

Voltage (max/min):

9 VDC / 7.8 VDC

Expected Battery Life:

1-3 years based on usage

Design Finishes:

US26D (Satin chrome)

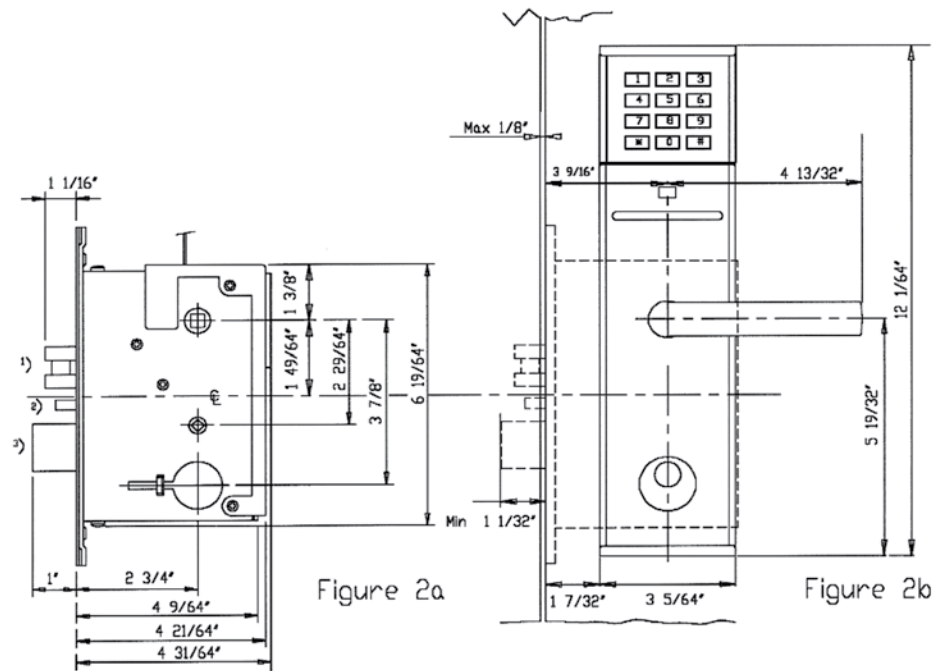
US3 (Polished brass)

US26 (Polished chrome)

Light Bronze

US4 (Satin bronze)

RAL color finishes

**Technical Data/Features:****Dual Card reader****Smart Card:** EMV/MPCOS standard platform**Magnetic Stripe:** Reads all tracks 1, 2 & 3. HiCo or LoCo.

For Conference Guest or temp. user

Monitoring:**TCP 5000 & 4000 (R/W):** Cylinder and Deadbolt**TCP 6000 Model:** Cylinder, Deadbolt, Latch,
and Auxiliary Latch**Operating Modes**

PIN required: In addition to card, 4-digit PIN is required

No PIN required: Only card is required

Passage Mode

- **Automatic:** The door automatically becomes unlocked during passage mode setting

LifeSafety Cylinder**Security:** 7-pin tumbler mechanism, high pick, resistance and recodeable.**Top Security:** Patented key & blocking side bar system; full resistance to all known methods of picking (ASSA V10)**Optional:** Other manufacturer's mortise cylinders**ASSA ABLOY**

ASSA ABLOY Hi-O Technology



HI-O TECHNOLOGY™

ASSA ABLOY's Hi-O (Highly Intelligent Opening) technology is a new concept for electronic door solutions that simplifies installation, service and upgrade of a building's security and life-safety system.

The foundation of Hi-O is a CANbus (CAN for Controller Area Network) data network that connects electronic door components together, allowing them to exchange and share encrypted information. Every device (the lock, exit device, electric strike, proximity reader, door operator, push button, etc.) is connected through a 4-wire cable; two wires for power and two for data communication.

Building on that foundation, Hi-O is the application embedded into each component determining how it behaves with different components under different circumstances. CAN provides the physical and networking architecture for connecting next generation opening hardware. Hi-O enabled opening components allow access control and other systems to leverage the intelligence of the opening.

While the CANbus operators and plug-in system makes installation easier, the real benefits accrue to end users who end up with an access control system that has intelligence all the way down to the door. Hi-O has the ability to troubleshoot or run a self-diagnostic check of the system more effectively because the CANbus system is always aware of failures on the network. System technicians and administrators can also analyze door behavior and check on things like over-voltage that in the past would have required a site visit. This additional processing power means maintenance can happen automatically with problems sorted out before they develop. And at another level, security managers can now know that doors are closed, locked, functional and fully maintained.





Hi-O TECHNOLOGY™



HT2 Wiegand Translator

The HT2 is a gateway unit and an intelligent connection terminal block. It allows a Hi-O door opening to be connected to a traditional non-Hi-O access system, by converting Hi-O data to Wiegand and relay I/O.

Data

- Input Voltage: 12-24 V DC
- No of Hi-O ports: 2
- Weight: 200 g
- Temperature range: 41°F to 104°F
(non-condensing)



HT3 Mechanical Hub

The Hi-O HT3 allows all Hi-O components in an opening to be connected together using terminal block method. The HT3 hub is designed to ease installation of a Hi-O door environment.

Data

- Input Voltage: 12-24 V DC
- No of Hi-O ports: 6
- Weight: 200 g
- Temperature range: 41°F to 104°F
(non-condensing)

Enclosure

- Impact-resistant ABS plastic



H.E.S.

LIMITED ACCESS

Hi-O Technology



HT1006 Hi-O Electric Strikes

The smartest, most versatile electric strike available

Add the HT1006 hybrid electric strike to your HI-O opening for the best in network intelligence and physical security at the door.

Standard Features

- Fail secure only
- Stainless steel construction
- Static strength 3070 lbs.
- Dynamic strength 350 ft-lbs.
- Endurance 1,000,000 cycles
- Non-handed
- Accommodates up to 1" deadbolt
- LBSM – Latchbolt strike monitor
- Electro Lynx® connector
- Five year limited warranty



ANSI A250.13-2003 windstorm resistant



fire rated



UL 1034 burglary listed



grade 1

Frame application: * Steel * Aluminum * Wood

Specifications

- UL10C, 3 hour fire-rated
- ANSI 250.13-2003 windstorm listed
- UL1034, burglary-resistant listed
- ANSI/BHMA A156.31, Grade 1
- NFPA-252 fire door conformant
- ASTM-E152 fire door conformant
- Florida Building Code approved
- Patented design

Faceplate options sold separately.

Electrical: • Hi-O self-regulating power, 12-24V

Order #	Item #	Catalog Price
366-6000	HT1006 630	\$796.00



HT5000 Hi-O Electric Strike

The smartest grade 1, low profile solution

Add the HT5000 to your Hi-O opening for the best in network intelligence and physical security where there is limited space behind the jamb.

Specifications

- UL 1034, burglary-resistant listed
- ANSI/BHMA A156.31, Grade 1
- Patented design
- Frame application:
 - * Steel * Aluminum * Wood
- Electrical: HI-O self-regulating power, 12-24V



UL 1034 burglary listed



field selectable (fail secure / fail safe)



grade 1

We offer several types of faceplate options to accommodate your application. Faceplate options sold separately.

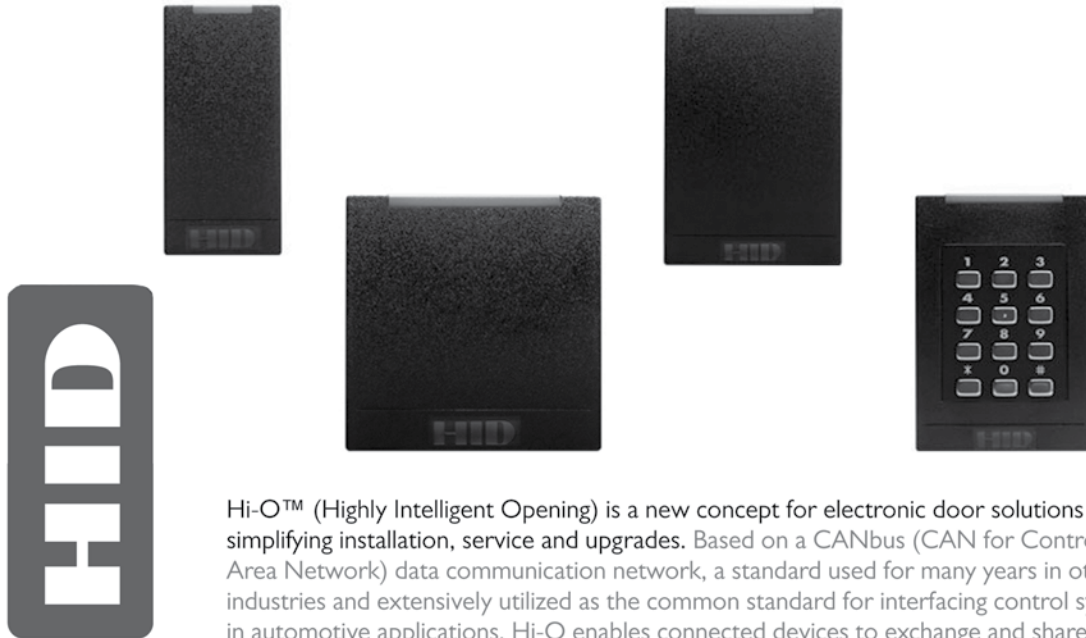
Standard Features

- Tamper resistant
- Static strength 1,500 lbs.
- Dynamic strength 70 ft-lbs.
- Endurance 500,000 cycles
- Field selectable fail secure/ fail safe
- Non-handed
- Accommodates 1/2" - 5/8" latchbolt (5/8" with 1/8" door gap)
- LBM-Latchbolt monitor
- ElectroLynx® connector
- Trim enhancer included
- Five year limited warranty

Order #	Item #	Catalog Price
366-6010	HT5000 630	\$411.60

13.56 MHz Contactless

Hi-O™ iCLASS® Readers



Hi-O™ (Highly Intelligent Opening) is a new concept for electronic door solutions simplifying installation, service and upgrades. Based on a CANbus (CAN for Controller Area Network) data communication network, a standard used for many years in other industries and extensively utilized as the common standard for interfacing control systems in automotive applications, Hi-O enables connected devices to exchange and share encrypted information.



Every device (e.g. electric strike, HID iCLASS® reader, door automatics, etc.) is connected through a four-wire cable, with two wires for power and two for data communication. When connected, the plug-and-play devices automatically detect what other hardware is on the network, check for conflicts, and if none are found, begin sharing information. Encrypted data exchange between each of the devices on the network provides improved security over a traditional Wiegand or Clock-and-Data interface. The bi-directional communication link also enables host controller reader behaviour, including visual (LED) and audio (beeper) indicators, and polling for reader on-line/off-line status.



- Works only with other Hi-O-compliant access control panels and other door devices in a Hi-O network
- Available with iCLASS R10, R15, R30, R40 and RK40
- Bi-directional encrypted protocol unlike Wiegand or Clock-and-Data; Each door device (electric Strike, door openers, access control reader) is connected to the same network using identical cabling structure
- Each door device offers “plug-and-play” capability with each device operating in a basic configuration as soon as it is connected
- Data Network based on ISO Standard CAN, established in 1995 and used in a variety of industries including shipping and cars
- Certifications FCC (US), CE (EU), C-tick (Australia, New Zealand), IC (Canada), SRRC (China), MIC (Korea), NCC (Taiwan), iDA (Singapore)



HT6900 Series

Powermatic®

The Norton® HT6900 PowerMatic® is a "Low Energy" power door operator designed to automatically open and close doors with a low energy opening force. It functions using an A/C motor and hydraulic pump to activate a heavy-duty hydraulic door closer controlled by an Electronic Control Module (ECM) board.

- Application versatility and ease of adjustment
 - Handed units
 - Push- or pull-side mounting
 - Interfaces with electric hardware and integrates with access control systems
- Holds Open options
 - 0-30 seconds (5 seconds minimum required for ADA and ANSI/BHMA A156.19)
 - Choice of infinite hold open features
- Obstruction Detection
 - Door closes if it hits an obstruction while opening
 - Door re-opens once if it hits an obstruction while closing



HT6960 Shown


FEATURES AND FUNCTIONS

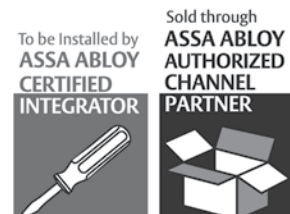
- Power assist selector switch
- Push and go selector switch
- Motor startup delay adjustment
- Vestibule function delay adjustment (For sequencing two or more units)
- Door hold open delay adjustment
- Single pole double throw (SPDT) relay output
- Blow open function for smoke ventilation
- Presence detector input
- 24 VDC @ 1.2A output
- Selector mode switch (3 position)
 - OFF – Disables signal except blow open. Unit still powered.
 - ON – Activates signal inputs for normal use.
 - HOLD OPEN – Activates the unit to the hold open position indefinitely.

ELECTRICAL DATA

- Power Input: 120 VAC, 60 Hz (+10%, -15%)
- Current Draw 1.5A
- Auxiliary Output 24 VDC @ 1.2A
- SPDT relay output for controlling electric strikes or electric locks not to exceed 1 amp @ 30 VDC

CERTIFICATIONS

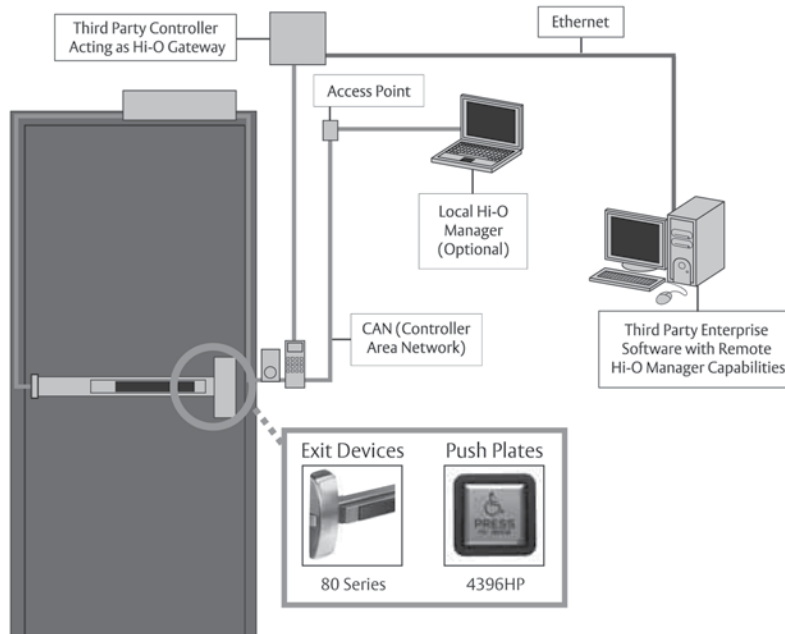
- UL, c-UL, UL for use on fire and smoke barrier doors
- Meets requirements for UL10C and UBC 7.2 for positive pressure
- 2-year warranty
- Meets requirements for Americans with Disabilities Act (ADA)
- ANSI/BHMA A156.19, certified 



SARGENT
ASSA ABLOY



HI-O TECHNOLOGY™



Highly Intelligent 80 Series Exit Device 56- Electric Latch Retraction

- Quietest motor driven electric latch retraction in the industry!
- 12VDC thru 24VDC operation
- No proprietary power supplies needed
- On-board Push retraction adjustability
- Available for 27"- 48" doors
- External door position switch (included) and QC8 hinge required*
- Full device monitoring
 - Latchbolt monitoring
 - Door position monitoring
 - Push bar monitored through full range of motion
 - Request to exit (inside) monitoring
- Easy installation with ElectroLynx® connectors
- Circuit board controller contained in rail assembly – no extra external mounting required

Highly Intelligent 4396HP Push Plate

- 6" x 6" Square wall switch with ADA logo and "Press to Open"
- 12VDC thru 24VDC operation
- Four-wire operation with ElectroLynx® connectors
- Circuit board controller contained in assembly – no extra external mounting required

Know More About Your Doors: SARGENT® Hi-O Technology Devices

ASSA ABLOY's standard-based Hi-O system—Highly Intelligent Opening—connects electronic door components together over a CAN (Controller Area Network) data network, allowing them to communicate and monitor the health of the opening. Intelligence is built into the device instead of one centralized logic unit, creating a plug-and-play system enabling connected devices to exchange and share encrypted information.

The Highly Intelligent 80 Series 56- Electric Latch Retraction Exit Device and Highly Intelligent 4396HP Push Plate are both quickly recognized when connected to the system— similar to what happens when a USB device is plugged into a computer. The exit device and push plate are connected with a four-wire cable using ElectroLynx® plug-in-play connectors for quick and accurate installation.

Hi-O Technology Benefits

- Installations are faster and troubleshooting is simpler
- Access control and door monitoring information pinpoint what's happening at the opening
- Components detect tampering and operate accordingly to preserve security and functionality
- Maintenance becomes predictive instead of reactive



Push Buttons with Hi-O™ Technology

Benefits of Hi-O:

- Low cost of ownership for the life of an opening
- Fast and accurate installation
- Predictive vs. reactive maintenance
- Enhanced troubleshooting

Features and Capabilities - Installation:

- Automatic configuration and immediate activation due to intelligence embedded in components
- Simple four-wire hookup for data & power
- Standardized ElectroLynx® connectors
- Self-regulating power, 12 - 24 volts
- Software (Hi-O Manager or other enterprise system) verifies correct door installation

Features and Capabilities - Monitoring:

- Local monitoring for installation and maintenance
- Encrypted communication between devices ensures integrity of the opening

Features and Capabilities - Diagnostics:

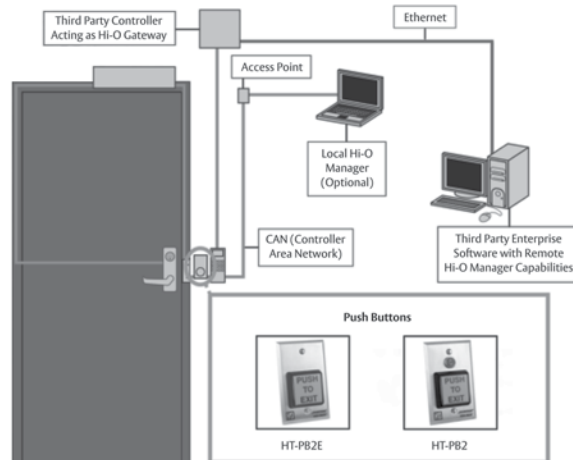
- Components provide detailed performance information
- System reports on maintenance needs
- Provides hi-low voltage monitoring, sabotage detection and usage counting for each device
- Troubleshoots system errors and pin points faulty device



HT-PB2
2" Square Momentary, SPDT, Green Button, Illuminated' Single Gang



HT-PB2E
2" Square Momentary, SPDT, Green Button, Single Gang



Hardwiring Made Easy™



ElectroLynx®
As part of their promise to provide innovative, fast and effective, and higher security solutions to their customers, ASSA ABLOY Group companies offer ElectroLynx, a universal quick-connect system that simplifies the electrification of the door opening.

ASSA ABLOY
AUTHORIZED
CHANNEL
PARTNER



ASSA ABLOY
CERTIFIED
INTEGRATOR





790 Contactless Electronic Lock

Designed with both the needs of guests and hoteliers in mind, the 790 lock adapts to your security needs regardless of the organization or physical structure of your hotel.

Contactless Technology

Guests only need to show their keycard to the lock to gain access.

Using contactless tags and RFID read-write technology, hotel managers can track employee movements by auditing staff keycards. Also, security personnel only need an audit keycard to extract the audit trail from a lock. Keycards will not demagnetize.

Total Security and Comfort

Guests will appreciate the deadbolt protection, the ergonomic design, and the easy-to-use keycard reading of the 790 contactless electronic lock. A standard mechanical key override gives hotel management and security staff peace of mind.

Worry-Free Maintenance

All electronics and batteries are located in the front lock housing, so there is no need to disturb guests for maintenance. Software upgrades can be implemented on-site, eliminating delays.

Simplicity

The locks are user-friendly for hotel guests and staff alike and can be supported by the FDU (Front Desk Unit) or by the Web-based ATLAS system.

Security for Every Door on the Property

With multiple locking options (mortise, cylindrical latch, European mortise, panic bar) and remote access controllers, the 790 contactless electronic lock can secure every door on the property. Entrances, exits, elevators, parking gates, amenities, offices, storerooms, and many other access points can benefit from the high level of security that the 790 contactless electronic lock brings.

Quality Engineering

The 790 electronic lock is the result of many years of experience in developing highly effective access control systems for the hotel industry. No detail has been overlooked, and quality is guaranteed.



790 Contactless
Electronic Lock



790 Contactless Electronic Lock



Remote Access Controller

Remote access controllers are used to regulate access to restricted areas, including executive floors, spas, health clubs, or parking areas where it is impractical to mount a standard electronic door lock. Contactless (read-write) card readers are available for these areas.



Exit Device Operators

Please guests by providing easier access to remote parts of the property. Secure back doors, parking lots or stairwell doors with contactless technology. Exit devices can also be placed on fire doors equipped with a panic device as well as access-controlled doors.



RFID Credential Options

MIFARE Mini: A cost-effective solution for guest keycards. Available with generic printing, hotel chain logos or custom printing.

MIFARE 1K: With a 100-event audit trail, ideal for staff keycards. Available as a fob (for extended-stay guests or staff) or wristbands (for guests at resorts and waterparks).

MIFARE 4K: With a 300-event audit trail, ideal for lock audit keycards to interrogate locks.

NFC enabled cell phone check-in

The 790 contactless electronic lock is equipped to communicate with near field communication (NFC) enabled cell phones. This means that a guest's "key" can be sent to their cell phones allowing them to go directly to their room.

Security Features

- When key expires, key and application are deleted from cell phone
- Key in cell phone can be cancelled in lock like a traditional keycard
- System is fully encrypted (multiple layered proprietary encryption)



NXP
founded by Philips





790 Contactless Electronic Lock

Total security and comfort

Guests will appreciate the deadbolt protection, the ergonomic design and the easy-to-use card reading of the 790 Lock.

A standard Mechanical Key Override gives hotel management and security staff peace of mind.

Read-write technology means that security staff can track employee movements by auditing staff keycards.

Increased operational efficiency

Easy to install, the 790 Lock simplifies access control, saving you time and money!

Easy to maintain, the lock housing is completely sealed: no card reader to maintain and clean.

Easy to audit, security personnel only need an audit keycard to extract the audit trail from a lock.

Security for every door in the property

With multiple locking options (Mortise, Cylindrical Latch, European Mortise, Panic Bar) and a Remote Access Controller with Contactless Card Reader, the 790 Lock can secure every door in the hotel.

Entrances/Exits, Amenities, Offices, Storerooms and many other access points can benefit from the high level of security that the Contactless 790 brings.

Functions

- Operates with reliable easy-to-use Radio Frequency Identification cards or tags (ISO 14443, Mifare)
- Reads keycard when presented to lock (Contactless)
- Provides visible and audible feedback; LEDs are mounted directly in the reader
- Automatically cancels previous guest's keycard to ensure privacy and security
- Operates with 3 AA batteries in front lock housing (no battery packs). Batteries can be changed without disturbing guests, no need to reprogram lock
- Batteries will last 100,000 openings (2 to 3 years)

Finish Options

Decorative as well as durable, these finishes are designed not only to complement but also to enhance any hotel décor.

Ocean Front finish is more durable than regular plated finishes and resists severe salt spray tests, making it ideal for properties with demanding environmental conditions such as ocean-front exposure, high pollution and harsh winters.

Features

- Read-write technology: the staff keycard carries the audit information
- Mixed site possible: Contactless and Magstripe electronic locks
- One-inch solid metal deadbolt for added protection and privacy (available with auto-deadbolt)
- Mechanical key override is standard
- Lock can be integrated into a master key system
- Control boards are coated and sealed to protect them from moisture and contaminants
- PMS (Property Management System) interface ready
- ATLAS or Front Desk Unit based

Lever Options

The 790 Lock is available with a standard long lever or a standard short lever.

Compliance and certification

- ADA-compliant for physically disabled guests and staff
- Shabbat-compliant lock available
- Meets UL 10C and ULC S-104, on fire rated door up to and including 3 hours
- Certified to ANSI/BHMA A156.13 Mortise locks (Grade 1)
- Certified to ANSI/BHMA A156.25 Electrified locks (Grade 1)
- Electronics Compliant to FCC part 15 Class A and CE directive 89/336/EEC





790 Contactless Electronic Lock

79 Lock Series

Using the latest in contactless RFID read-write technology, the 79 lock series offers a high-level of security. Your residents will appreciate its ergonomic design that only requires users to present the keycard to the lock reader to engage the lock. This feature is especially useful for residents with limited mobility and dexterity.

The 79 lock features a full-body design that is ideal for both new construction or retrofit properties. Its robust, tamper-resistant design covers holes left even by deadbolt cutouts.

While each lock maintains an audit trail to provide you with greater accountability, one of the most beneficial features is the system's ability to monitor staff movements throughout the property by auditing their keycard use-history. Staff keycards can also carry information about the lock such as low battery indication. This information helps with preventive maintenance, allowing property managers to proactively respond.

Further, electronics and batteries are located in the front lock housing, so maintenance can be completed without disturbing your residents or entering their apartments when they are not present. Software updates can also be implemented on-site to eliminate delays.

Quality Engineering	Compliance and Certification
<ul style="list-style-type: none"> • All-metal, heavy-duty locksets • One-inch solid-metal deadbolt for added protection and privacy (optional automatic-deadbolt) • Infrared (IR) communications link for programming and auditing • Drainage system designed to prevent internal condensation buildup • Available finishes include satin chrome, satin brass, and ultra-plated satin chrome (ideal for exterior applications) • Lock is factory programmable to toggle mode and remains open once unlocked • Multiple locking options: mortise (American and European), cylindrical latch, exit device, and remote access controller • Standard mechanical key override • Cylinder and key can be integrated into a master key system • Sealed reader provides tamper-proof security and withstands climate extremes 	<ul style="list-style-type: none"> • ADA-compliant levers • RoHS-compliant • Shabbat-compliant • Meets UL 10C and ULC S-104 up to and including three hours on fire-rated doors • Florida Building Code approved • Certified to ANSI/BHMA A156.13 mortise locks (Grade 1) and A156.25 electrified locks (Grade 1) • Electronics compliant to FCC part 15 Class A and CE directive 89/336/EEC
	Worry-Free Maintenance
	<ul style="list-style-type: none"> • Operates with three AA batteries in front housing (no battery packs) • Battery life sufficient for 120,000 door openings (2 to 3 years)



71M and 76M Models

In the housing market, Kaba understands that access control and security are paramount to property managers because they are key factors in attracting and retaining residents. The Evolution Series was created to address these needs. Built on years of experience and expertise, the multihousing line of Kaba products caters to the unique demands of the residential and housing markets. This access control system was designed specifically to improve security and simplify management of access privileges for multi-unit complexes such as apartments, condominiums, assisted living residences, military housing, or any location that requires security and key control.

Security Features and Advanced Tracking System

Kaba's multihousing solutions are designed to increase security for residents, property managers, and staff.

- The need to manage keys is virtually eliminated
- Cancel or replace keycards at any time without worry of a duplicate key compromising security and without costly locksmith charges
- Audit capabilities: up to 300 lock audits and 4,000 encoder audits
- Stand-alone unit requires no wiring
- Deadbolt or cylindrical options
- Mechanical key override option
- User-friendly encoder helps reduce mistakes
- High-quality material withstands the harshest environments



Designed with Resident Security and Comfort in Mind

- Operates with easy-to-use and reliable hi-coercivity (HiCo) magnetic stripe keycard, which helps prevent demagnetization and comes in a mini card format with the 71M model
- Lock features visual and audible feedback
- One-inch deadbolt contains a free-rolling pin for added protection and security
- Long lever, short lever, or knob options
- Automatically cancels previous keycard to ensure resident privacy and security, preventing previous resident from re-entering the room
- ADA-compliant



71M and 76M Models



Encoding and Access Management unit

The encoding and access management Unit (EAMU) is the "all-in-one" self-contained brain of this stand-alone lock system. Your staff will use the EAMU to perform multiple functions. This system is flexible enough to function as an encoder, lock programmer, and lock access auditor. The fully portable unit contains an internal battery backup that can last up to eight hours in the event of a power failure.



Exit Device Operators

Please your residents by providing easier access to remote parts of the property. Equip doors to parking lots or stairwells with exit devices that allow easy access with a simple swipe of a keycard. You can also convert alarmed fire doors to convenient access-controlled doors with exit devices.



Keycards

Hi-coercivity keycards replace traditional keys. These cards are encoded at 2700 Oerstedes (compared to 300 Oerstedes on traditional keycards), to minimize the risk of demagnetization.

The 71M model uses HiCo mini keycards that are 45% smaller than traditional keycards and will fit on a keychain.



Remote Access Controllers

Remote access controllers are used to regulate access to restricted areas like spas, health clubs, or parking areas.



In-Room Safes

Electronic in-room safes protect hotel guests' valuables without assistance from staff. Large enough to hold any 15-inch-screen laptop computer, they make casual theft virtually impossible.



9600 Series Cabinet Locks

9600 series cabinet locks use the same proven combination system as our other push-button access controls and are specifically designed for cabinet doors,

KABA®
ILCO™

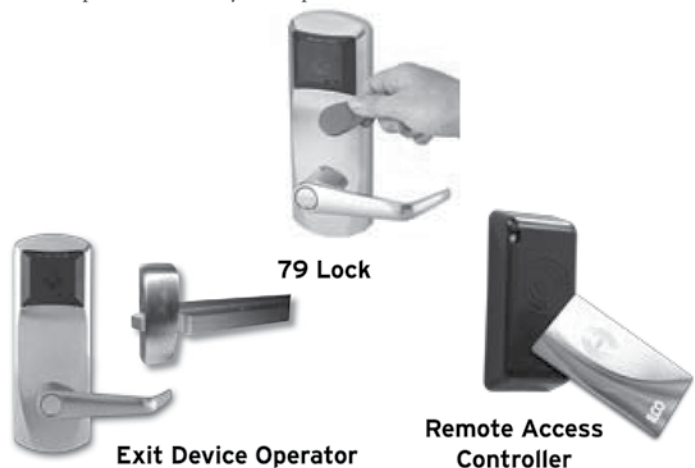
RezShield
MULTIHOUSING ACCESS CONTROL



The RezShield™ multihousing access control system is the integrated approach to providing safety and security for your residents while enhancing your operational efficiency and improving your bottom line. As a (.Net) web-based system, RezShield, an extremely user-friendly system, includes the standalone Kaba 79 RFID contactless electronic lock, providing an innovative and cutting-edge approach to access control and life safety.

The 79 lock presents a simple yet multi-faceted solution to address the complex access control needs of any multi-dwelling residential property. It features a completely sealed RFID reader that communicates on the industry-standard MIFARE ISO 14443A communication protocol.

Kaba Multihousing & Institutional is a division of the Kaba Group which has provided access control solutions that optimize security and convenience since 1862. Today, Kaba is recognized worldwide as a technological leader in the security products industry with operations in over 60 countries.





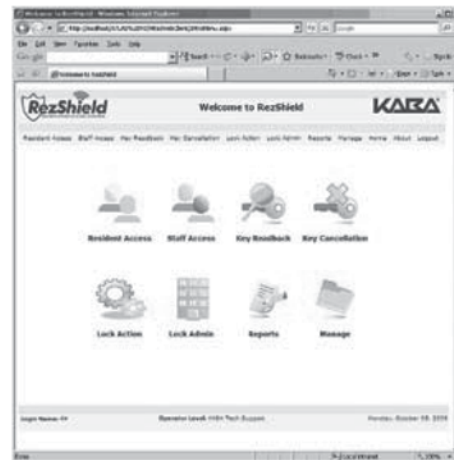
RezShield™ System

RezShield™ is designed for flexibility and simplicity. It integrates with existing IT infrastructures, reducing the need for a proprietary set-up or additional cabling. RezShield can be installed on a PC anywhere on the property. Once installed, it is scalable to accommodate any number of encoders and multiple workstations. The intuitive user-interface is browser-based using Internet Explorer 6.0 or higher.

As a key management and contactless electronic locking system, RezShield delivers multiple access levels for your residents, staff, and vendors. Whether you manage a student housing complex, assisted living facility, market-rate apartments, condominiums or any other kind of multi-dwelling facility, the software enables you to manage and control both system and lock data.

Features and benefits:

- Easy-to-use graphic user interface (GUI), complete with online help and tool tips to guide the user through programming functions
- Resident and employee credentials can be cancelled on an individual basis
- Time-based access control system includes user-selectable keycard expiration
- High-security key encryption, proprietary and unique to each installation
- Operator password required for system operation with eight operator levels
- Extensive reporting capabilities with a complete system audit trail





Hospitality Locks

DESE®

With ädesē®, SAFLOK™ has blended distinctive elegance and superior locking technology. Compatible with SAFLOK's System 6000™ front desk operating system and Messenger® ZigBee bi-directional wireless communication system, this premier electronic lock is masterfully crafted for the world's most prestigious hospitality properties, creating a revolutionary access management system.



ADESE®

QUANTUM™

Quantum™ sectional trim lock, with its minimal physical impact on design aesthetics, provides “worry-free” performance. This sectional trim design is available in two configurations: the Quantum MT™ (insertion card reader) and the Quantum ädesē® (contactless RFID reader) locks. SAFLOK's™ robust ANSI Grade 1 mortise set (an integral feature in MT™ and adese) is combined with sophisticated technology to provide reliable security while offering minimalist design.



QUANTUM™

MT® RFID

With the MT™ RFID lock, the MT lock is updated and enhanced with an RFID reader, which is compatible with MIFARE credentials. The MT RFID features a flush-mounted reader and is ideal for the retrofit market.



MT®

SAFLOK MT™

SAFLOK™ MT™ is a multi-technology locking system that provides properties around the world with added levels of security and greater efficiency. The non-volatile FLASH circuitry stores over a year's worth of lock data (or up to 5,900 entries) providing detailed audit-trail information, such as date and time of the entry as well as the ID code of the employee or guest using the keycard. The MT™ lock is easy to use and works with the Windows-based System 6000™ and DeskLinc™ front desk systems.

CONFIDANT MT®

Confidant MT® has a stylish cylindrical latch solution. It combines modern design and expert engineering to present a multifaceted security option that is ideal for back-of-house security. As a multi-technology lock, it conveniently reads all three types of keycard media – smart, memory, and magstripe cards.

CONFIDANT
MT®





Multihousing

Peace of mind is of great importance to people shopping for a safe and secure place to live. Because of this, exceptional security features give your property a competitive edge over others on the market for attracting and retaining residents. SAFLOK™ products provide property protection while reducing both your operating expenses and your liability.

InSync® Locks

SAFLOK™ products are the trusted name in multifamily communities installed in market rate, senior communities, privatized student housing, or any multi-dwelling unit properties. The InSync® series puts you in touch with key control. The series features a complete range of versatile locks that communicate by means of a wireless RFID (radio frequency identification) platform. The operating system for the locks is the Windows-based SAM® RF software. This software programs information, such as access codes, onto the RFID key.

Operating Systems

SAFLOK's™ front office management systems are designed to drive down operating expenses and minimize liability by providing superior access control throughout your property. A powerful management tool that allows you to better manage, authorize, and tailor community access. InSync® locks and SAM RF® combine three independent systems commonly used on a property. Key control, community access, and unit entry hardware are all contained in one operating platform using a single RFID key credential for greater efficiency.

WELCOME TO THE SAFLOK SUPPORT WEBSITE



Common & Perimeter Access

SAFLOK™ provides complete community area property control with a versatile selection of battery operated door hardware and low voltage devices that accommodate any door scenario. Options range from a complete lineup of locking hardware functions, exit devices, and wall-mounted readers that work in conjunction with electrically powered locking devices.

Safes

SAFLOK's™ complete line of in-room safes combines impeccable construction, security, and user-friendly operation. Available in a variety of sizes and colors, these safes can accommodate a wide array of electronic devices, from laptop computers to pocket PCs. Ideal in-unit amenity for resident's personal property safekeeping.

For more information, visit
saflok.com



Multihousing

InSync® I

(Cylindrical Latch with 1" Dead Bolt)

The InSync® I lock includes a robust sectional trim. The inside trim interconnects the dead-locking latch bolt below to the 1" saw-proof deadbolt. When the lever is depressed, both bolts are simultaneously retracted.



InSync I

InSync® M

(Mortise Lock)

Within the series, the InSync® M lock offers property managers an elegantly styled security option that optimizes resident safety. InSync M is a full mortise lock embodied in a sleek and gently contoured metal housing.



InSync M

InSync® C

InSync® C products are available as either stand-alone battery-operated door locks or hard-wired AC/DC electrically powered devices designed to work in conjunction with other electronic latching hardware. This family of products can also be used to control elevators and used in conjunction with intercom systems.



InSync C

InSync® L

(Cylindrical Latch)

InSync® L offers security managers an elegantly styled security option. It is a tubular latching option embodied in a sleek and gently contoured metal housing.



InSync L

InSync® D

(Dead Bolt)

The InSync® D lock includes a robust sectional trim, fully enforced by a 1" saw-proof deadbolt.



InSync D



Military

SAFLOK™ is a valuable supplier to all branches of the U.S. military, providing advanced technology solutions to secure government and military facilities here at home and abroad. We provide a wide range of security solutions that include personnel access management systems, electronic locks, exit devices, and door control hardware.

Locks

SAFLOK™ offers a diverse collection of electronic locks that combine revolutionary technology with innovative design and functionality. With a multitude of choices to fit your specific needs, our locking systems provide added levels of security and efficiency throughout your facility.

Operating Systems

SAFLOK™ offers access management systems that enable you to better manage, authorize and control a variety of access levels. Our access management systems are designed to streamline security procedures, and maximize staff efficiency while providing superior access control and key management flexibility. Each system offers an array of options that can be customized to meet your facilities specific requirements.

Perimeter Access

SAFLOK™ offers a wide variety of electronic locking hardware for controlling the common-areas throughout your facility. This includes rim and vertical rod exit devices as well as remote controlled units that can activate electric strikes, magnetic holders, along with existing automatic door operators.

Safes

SAFLOK's™ complete line of in-room safes combines impeccable construction, security, and user-friendly operation. They are available in a variety of sizes and colors to accommodate a wide array of electronic devices, from laptop computers to pocket PCs. Ideal in-unit amenity for military personnel's personal property safekeeping

■



A member of the KABA® Group

Military

Key Card Locks

Adese®

With ädesē®, SAFLOK™ has blended distinctive elegance and superior locking technology. Compatible with SAFLOK's System 6000™ front desk operating system and Messenger® ZigBee bi-directional wireless communication system, this premier electronic lock is masterfully crafted for the world's most prestigious military establishments, creating a revolutionary access management system.



Quantum™

Quantum™ sectional trim lock, with its minimal physical impact on design aesthetics, provides "worry-free" performance. This sectional trim design is available in two configurations: the Quantum MT™ (insertion card reader) and the Quantum ädesē® (contactless RFID reader) locks. SAFLOK's™ robust ANSI Grade 1 mortise set (an integral feature in MT™ and adese) is combined with sophisticated technology to provide reliable security while offering minimalist design.



MT™

SAFLOK™ MT™ is a multi-technology locking system that provides properties around the world with added levels of security and greater efficiency. The non-volatile FLASH circuitry stores over a year's worth of lock data (or up to 5,900 entries) providing detailed audit-trail information, such as date and time of the entry as well as the ID code of the employee or guest using the keycard. The MT™ lock is easy to use and works with the Windows-based System 6000™ and DeskLinc™ front desk systems.



Confidant MT®

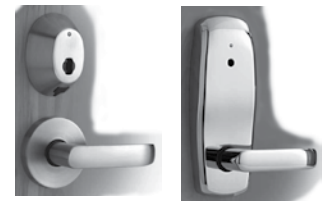
Confidant MT® has a stylish cylindrical latch solution. It combines modern design and expert engineering to present a multifaceted security option that is ideal for back-of-house security. As a multi-technology lock, it conveniently reads all three types of keycard media – smart, memory, and magstripe cards.



Key Locks

InSync® Locks

SAFLOK™ products are the trusted name in multifamily communities, student housing and campuses, commercial buildings, as well as transient and long-term military housing. The InSync® series is the latest lock line. The series features a complete range of versatile locks that communicate by means of a wireless RFID (radio frequency identification) platform. The operating system for the locks is the Windows-based SAM® RF software. This software programs information, such as access codes, onto the RFID key.



InSync I

InSync M



InSync C



InSync L



InSync D

