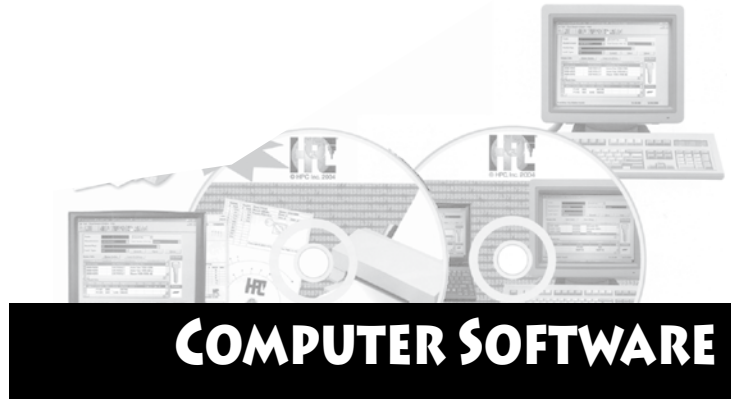


# COMPUTER SOFTWARE

## SECTION 3



## COMPUTER SOFTWARE

### Computer Software

#### Vendor Index

Desktop Dispatcher "Service Call Software"	2
Framon "Genericode ME" Code Program & More	3
Ilco "Kreate-A-Key"	6
Strattec "PartSearch" Searchable CD-ROM	6

### Computer Software

#### HPC Software Index

HPC "CardWare" Code Card Printing Software	4
HPC "CodeSource" Ultimate Code Retrieval Program	4
HPC "CodeSource LS"	5
HPC "CodeSource" Palm & Pocket	4
HPC "MasterKing" Developpe Superior Master Keying Systems	5
HPC "KeyChoice" Key Blank Cross Reference	5
HPC "KeyTrail" Key Control System	5
HPC "Live Action Learning Software Series"	6

## Business Software

# Desktop Dispatcher

## Service Call Software

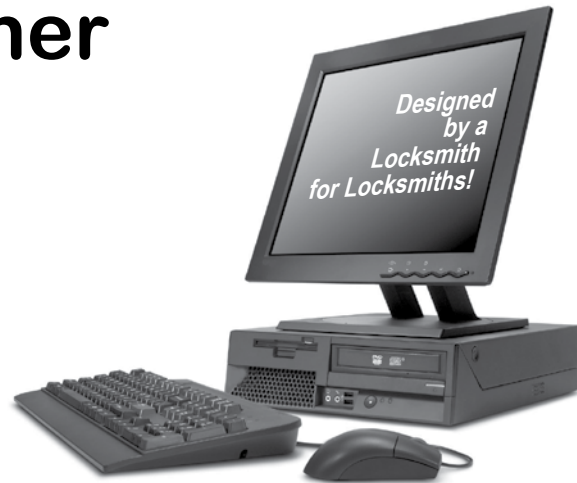
Your Windows based solution for creating, printing, sorting, & tracking any kind of service call.

### Features

- Easy to use, point click windows based program.
- Creates, stores, prints & sorts service calls and customer lists.
- Shows customer's service history on the screen as you enter a new call.
- Reminders for appointments. • Tracks call backs.
- Stores completed calls for quick retrieval and reference
- Builds reports on cleared calls to show employee performance, average parts, time spent, etc.
- Expandable to include an invoicing module that builds an invoice with the click of one button.
- Automatically stamps the date and time the call was created and cleared.
- Unlimited number of calls.
- Unlimited number of technicians.
- The arrival & departure times can be stamped on the work order.
- Improved calendar layout allows user to not only view the appointments, but set new appointments and reassign or reschedule existing appointments without switching back and forth between screens.
- New screen in the customer list allows the user to store photos of the customer's location and equipment. They can even make audio notes about the customer or the equipment.
- There are reminders that tell the user when a call is running over the allotted time (user defined)
- List View layout allows the dispatcher to find any technician with just a glance.
- New header allows the user to customize the work order with their own logo.

### MORE FEATURES:

You can use the new Caller ID module to see who's calling and even create a new work order before you answer the phone. Click on one button and you can record an audio message or type a text message. Click another button and you can create a



work order without having to enter the phone number manually. (Caller ID service, compatible modem required.)

Now you can export your appointments to Outlook and even set reminder alarms to warn you of upcoming appointments.

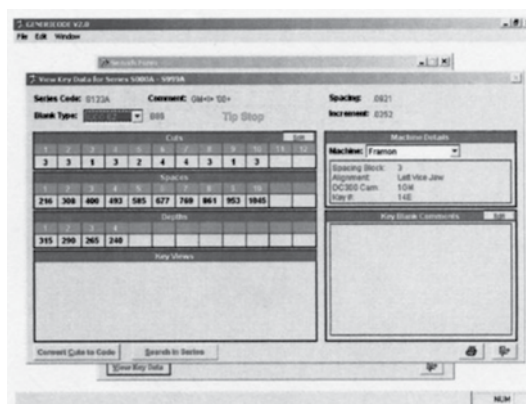
Hot keys and shortcuts to speed up common tasks have been added. There are ten shortcuts that work with the Ctl and others that work with the Alt key.

Now its easier to schedule appointments with our new and improved calendar. A new layout lets you spot open time slots in a flash. You can even set the time, duration and assign the call without having to switch screens.

Now the invoicing module not only tracks the money your customers owe you, but the added module, allows you to track the money your company may owe sub-contractors. It also works for other payables. Everything is done automatically so there is no need to retype any information. Extra features include a vendor file that stores your contact/account information, form letters, reports, and more.

An invoicing module is available (an additional \$500.00) which allows the user to create an invoice for a call using the information that they already entered on the work order. There is no need to retype the information. Plus, you get thank you letters, statements, and tax reports.

Order #	Item #	Price
845-8080	NSP Desktop Dispatcher	<b>\$500.00</b>



FRAMON

## GENERICODE ME

### More Than Just a Code Program

Genericode ME gives you all the information you need to cut keys with the following machines:

- FRAMON #1, #2, AND DC-300
- A-1'S PAK-A-PUNCH
- ITL
- ILCO EXACTA
- HPC 1200, 1200PCH, & CODEMAX
- ASCODEME ALSO RUNS THE ITL 950 & 9000



### The GENERICODE ME includes:

- **General Code Program:** Lookup key information from a code.
- **Utility/Vehicle/Motorcycle/Padlock Programs:** Lockup key information by manufacturer, model, and input codes or cuts.
- **Key Blank Search:** Don't know the manufacturer? Find out when you know the blank number.
- **Depth & Space Program:** Lookup depth & space information for virtually any lock in use today.
- **Information Program:** A directory of companies, both foreign and domestic.
- **Locksmith Ledger Index:** Find articles by subject dating back to 1985.

### GENERICODE ME Runs on:

- Windows ME
- Windows 95 & 98
- Windows NT & 2000
- Windows XP

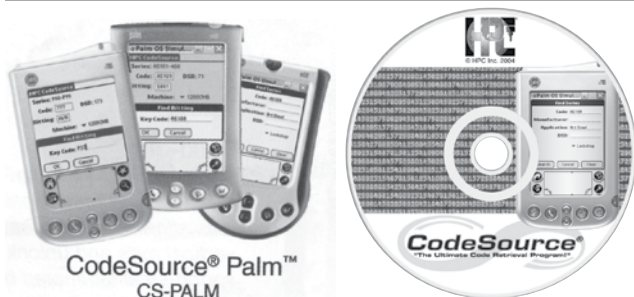
Order #	Item #	Catalog Price
315-0020	ASGCODEME	<b>\$1,150.00</b>



### HPC CardWare

With HPC's CardWare Code Card Printing Software you can print a code card for any key you need to cut. You can search by manufacturer, code series, key blank, DSD number, or card number to access the appropriate depth and space data. From there, a simple click instantly prepares a code card, ready to print. The code cards include the space and depth measurements (in inches or millimeters), applicable code series, appropriate cutter & jaw to use, and a picture of the key in the jaw showing proper gauge point. The perfect complement to your card operated code machine. Prints code cards for : Blitz, Switch Blitz, The Punch Machine, & Pocket Size Key Decoder.

Order #	Item #	Catalog Price
360-5035	CW-CD	<b>\$198.00</b>



CodeSource® Palm™  
CS-PALM



CodeSource® Pocket  
CS-POCKET

## CodeSource™ The Ultimate Code Retrieval Program

- Instant Access to over 2 Million Codes
  - Able to Search by Code, Manufacturer, Code Card Number, DSD Number or Key Blank Number
  - Able to search by Bitting or Partial Bitting
  - Displays 1200CMB/PCH Code Card Number
  - Displays Complete Micrometer Measurements
  - Displays Multiple Key Blank Choices
  - Displays Correct Cutter and Punch Number
  - Displays Correct Jaw Side
  - Displays Graphic of Actual Keyway
  - Displays Illustration of Actual Cut Key
  - Displays Added Information on Manufacturers' Specifications
  - Displays Added Information on Specific Code Series
  - Allows User to Input Notes into any Given Code Series
  - Able to Print Out all Code Specification Screens
  - Immediate Access to On-Screen Help Function
  - Able to Interface with HPC's KeyChoice™
  - Fully Compatible with HPC's Codemax
- Designed to run on Windows 3.1 & 95

#### Minimum System Requirements:

- IBM Compatible Computer;
- 386 Micorprocessor
- 4MB RAM; 40MB Hard Drive



### CodeSource

HPC's upgraded CodeSource Plus is 8 programs in one! Complete code retrieval, detailed depth & space information, search by bitting, customer database with business card printing, key blank cross reference, code card printing, custom codes, and car opening information. The ultimate code retrieval program.

Order #	Item #	CodeSource	Catalog Price
360-0020	CS-CD	Plus	<b>\$1390</b>
360-5005	CS-CDLITE	Lite	<b>1190</b>
360-5025	CDPL-CD	Padlock Codes only	<b>498</b>
360-5030	CSVH-CD	Vehicle Codes only	<b>538</b>

### CodeSource Palm & Pocket

Search through millions of codes using the latest computing technology. CodeSource Pocket is designed to work on Pocket PCs and CodeSource Palm is designed to work on Palm Devices. Search for codes by manufacturer, application, DSD, as well as partial bitting. Carry your entire code library in the palm of your hand.

Order #	Item #	Catalog Price
360-5010	CS-PALM Palm	<b>\$900.00</b>
360-5015	CS-POCKET Pocket	<b>900.00</b>

## HPC MasterKing™

### For Development of Superior Master Keying Systems



Creates master keying systems faster than ever before. Enter some basic information and MasterKing will generate your systems quickly and easily. Eliminates transposed or repeated numbers as well as uncuttable keys. Manually writing master key systems can be very time consuming and error prone. Use MasterKing to produce accurate systems in minutes instead of days.

Features:

- Allows Manipulation of the Key Bitting Array
- Multi-User/level Password security
- Modifiable Report Format allows you to print only what you want
- Powerful Database feature allows you to export your systems in Text, RPT, Dif, ODBC, Tab or Comma Separated, Excel, Lotus, or Word format
- Contains a Database of more than 150 lock types from more than 50 manufacturers
- Allows Entry of new manufacturers through custom hardware feature
- Very intuitive and easy to navigate
- Able to generate 1 to 5 levels in List Format
- Displays Change Keys, Block Master, Row Masters, Vertical & Horizontal Grand Masters, Page Masters, Multi-Page Masters, and the TMK in Page Format
- Supports Cross-Keying
- Supports Total Position Progression and Rotating Constants
- Handles Locks containing 4, 5, 6, 7, or 8 Chambers
- Computes Driver and Control Pins in Interchangeable Core (IC) Systems
- Allows Manual Entry of Existing Systems
- Allows Customized Progression Sequence
- Allows Entry of Descriptions for each Bitting
- Automatic Manufacturer Specification Fill-in with Easy Editing Capacity
- Help File and Tutorial
- Search by Bitting, Key Symbol, or Description

Order #	Item #	Catalog Price
360-2204	MK-CD	<b>\$670.00</b>

## HPC Software

All are drop ship items.

Upgrades from old software are available.

### Key Blank Cross-Reference



## KeyChoice

Key Blank Cross-Reference.

(Formerly KeyTrack)

Order #	Item #	Catalog Price
360-2430	KC-CD	<b>\$199.90</b>

### Key Management

## KeyTrail

(Formerly QuickKab)

Advanced key control systems program gives knowledgeable security companies & their customers a computerized record keeping ability for single or two tag key control cabinets.

Allows for 500 separate key control systems (kept on line).

Understands DHI door & master keying nomenclature, as well as support nomenclature, for up to 6 levels of master keying. On CD.

Non-Stock Item.

Order #	Item #	Catalog Price
360-2135	KT-CD	<b>\$790.00</b>

### CodeSource Lockshop Codes Only

#### CodeSource LS (Lockshop Codes only)

360-2401	CSLS-CD (compact disk)	<b>458.00</b>
----------	------------------------	---------------

**Don't Forget to Send in Your  
Registration Card with Your Software  
or Key Machine.**

**You must be a registered user to  
receive product updates!**



## Live Action Learning Software Series

HPC's new Live Action Learning Software Series is a collection of interactive guides on CD-ROM for your Macintosh or PC computers. These guides are loaded with informative audio, video, animation, photography, and illustrations that clearly and concisely take you through the essentials of the security industry. Move at your own pace while learning to pick and re-key pin and disc tumbler locks, as well as pick tubular locks. Whether you are new to the industry, want to brush-up your skills, or are in charge of training new security specialists, the Live Action Learning Software Series is ideal.

**Catalog Price : \$158.00**

Order #	Item #	Description
360-0555	HT-PLX1	How to Pick Locks
360-0556	HT-PTL1	How to Pick Tubular Locks
360-0557	HT-RKC1	How to Re-Key Cylinders



## PartSearch - Searchable CD-ROM

Users of PartSearch will be able to cross reference vehicle information from 1972 to present. Searches can be performed based on vehicle make or model and STRATTEC or competitor part numbers.

This is not meant to replace the written literature, but is offered as an additional resource. PartSearch must be loaded on the computer, it will not run from the CD alone.

### Requirements:

- CPU: Pentium 166 w/MMX (Pentium 200 or greater is recommended)
- Windows 95 or higher (U) Available while supplies last.
- 15MB of Hard Disk Space

Order #	Item #	Catalog Price
830-1000	(U) 707676	<b>\$14.74</b>



## Kreate-A-Key™

### Premium Code Software

This software can be utilized stand-alone or interfaced with the Ultracode and Triax-e.code to cut keys by code automatically.

- Search by code, manufacturer, card number, key blank reference, key type, vehicle make, model, year and more
- Key blanks illustrations and profiles
- Automotive, commercial, residential & padlock database
- Compare and Create custom key dimensions and download to the Ultracode
- Key blank reference lists key blank numbering systems for the popular manufacturers
- Supports popular code machines
- Store and retrieve codes
- Optional modules increase basic Kreate-A-Key software capabilities Intuitive user interface

### Optional Modules:

Increase the basic Kreate-A-Key software capabilities with these add-ons.

- Auto Module-Car opening information, cylinder tumbler locations, programming procedures for transponder keys and key fobs and more.
- Triax-e.code Module-Allows the Kreate-A-Key to take control of the Triax-e.code to automatically cut side-winder style keys.
- MK Module-Create masterkey systems easily.
- Automatic key cutting capabilities, pinning and bitting charts.

### Specifications:

Components: Auto Install CD Windows Application

### Minimum Requirements:

Windows 2000/XP/2003, CD ROM drive, Windows supported Printer, Pentium CPU, 128MB RAM, 100MB Available hard disk space.

Order #	Item #	Catalog Price
400-4000	Kreate-A-Key	<b>\$1560.00</b>